

-16-

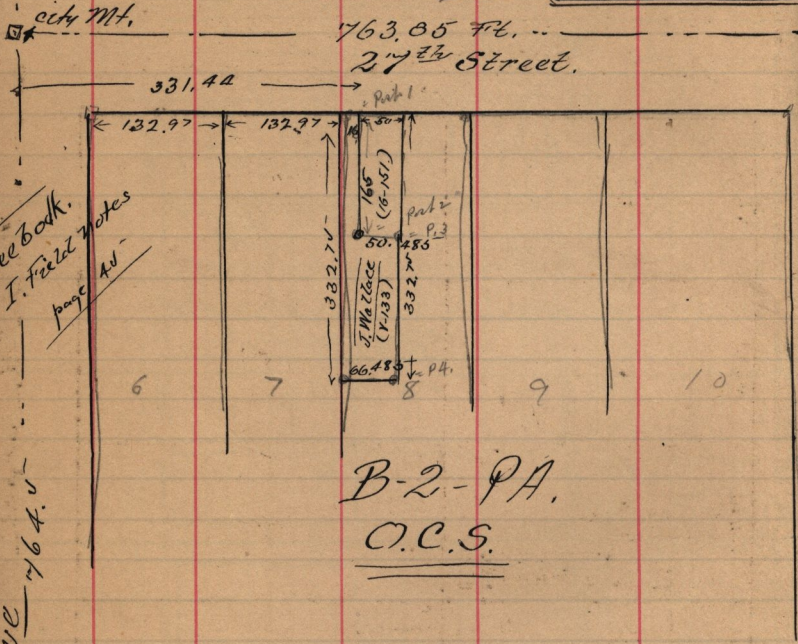
Survey made for Jos. Wallace

Apr. 13-1875-

Y-133-4 J.C. Armstrong to Jos. Wallace.

May 21-1887, \$600,

W¹/₂ Lot 8. B 2, P.A., O.C.S. (Jayman & Clark, Chain)



see book.
I. Field notes
page 41

Adams Ave 164.5

B-2-PA.
O.C.S.

Part 1 as shown above is 13.5 ft. E. of fence. line south
 " 2 " " " " 13 " E. of fence " South
 " 4 " " " " 62.5 " E. of " " North